

# AGUABRUTA HD FVBACH



Inner Tube: black synthetic rubber tube.

Reinforcement: high tensile textile braid with steel wire helix.

Covering: smooth made from vulcanized fiberglass and orange flame retardant synthetic rubber that is resistant to a maximum external temperature of 550°C.

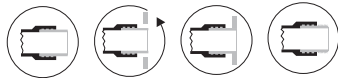
80°C  
MÁX.

## APPLICATION

Large bore hose especially designed for heavy-duty water pumping service during cooling services in electric furnaces. Due to its applied position (in a "U-shape") and constant movement it is available only with integral nipples.









## END FITTINGS



NPL NFG NFF NRM

150PSI

|     |  |  |  |  |  |  |
|-----|---|---|---|---|---|---|
| 4"  | 5 3/8"  | 20  | 9,62  | 620   | 612   |   |
| 5"  | 6 1/2"  | 20  | 13,76   | 620   | 762   |   |
| 6"  | 7 3/8"  | 20  | 15,17   | 620   | 912   |   |
| 8"  | 9 7/8"  | 20  | 28,54   | 620   | 1218  |   |
| 10" | 11 7/8"   | 10  | 35,50   | 620   | 1524  |   |

300PSI

|    |         |    |       |     |      |
|----|---------|----|-------|-----|------|
| 4" | 5 1/2"  | 20 | 10,90 | 620 | 612  |
| 5" | 6 1/2"  | 20 | 13,33 | 620 | 762  |
| 6" | 7 7/8"  | 20 | 18,90 | 620 | 912  |
| 8" | 10 1/4" | 20 | 33,69 | 620 | 1218 |

