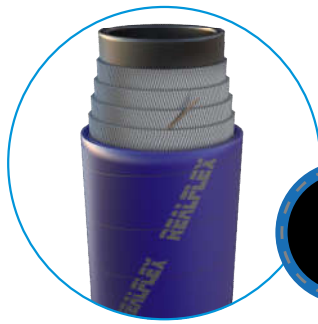


OIL HD



Inner Tube: black synthetic rubber tube resistant to oil derivatives, biodiesel and alcohol.

Reinforcement: high tensile textile braid with static conductive filament.

Cover: smooth (wrapped), made from blue rubber that is abrasion, weather and oil derivative resistant.

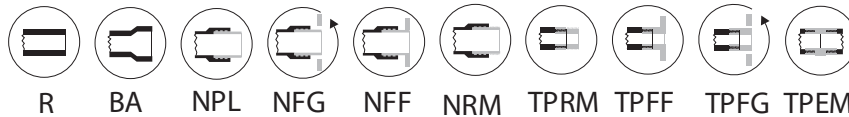
80°C MAX.

APPLICATION

Recommended for heavy-duty transfer and discharge services involving oil derivatives and covering a diverse range of fuels, such as: gasoline, alcohol, biodiesel and diesel oil, among others. Full-face end fittings not available for this product.



END FITTINGS



75PSI	3/4"	1 3/8"	20	0,81	N/A	228				
	1"	1 5/8"	20	1,08	N/A	300				
	1 1/4"	1 7/8"	20	1,25	N/A	384				
	1 1/2"	2 1/8"	20	1,46	N/A	456				
	2"	2 5/8"	20	1,87	N/A	612				
	2 1/2"	3 1/4"	20	2,42	N/A	756				
	3"	3 5/8"	20	2,88	N/A	912				
4"	4 3/4"	20	3,71	N/A	1212					

150PSI	3/4"	1 3/8"	20	0,88	N/A	228				
	1"	1 5/8"	20	1,13	N/A	300				
	1 1/4"	1 7/8"	20	1,35	N/A	384				
	1 1/2"	2 1/4"	20	1,53	N/A	456				
	2"	2 3/4"	20	1,95	N/A	612				
	2 1/2"	3 1/4"	20	2,82	N/A	756				
	3"	3 3/4"	20	3,33	N/A	912				
4"	4 7/8"	20	4,55	N/A	1212					

300PSI	3/4"	1 1/2"	20	1,03	N/A	228				
	1"	1 3/4"	20	1,31	N/A	300				
	1 1/4"	2 1/8"	20	1,73	N/A	384				
	1 1/2"	2 3/8"	20	1,98	N/A	456				
	2"	2 7/8"	20	2,49	N/A	612				
	2 1/2"	3 3/8"	20	3,09	N/A	756				
	3"	3 7/8"	20	4,02	N/A	912				
4"	5 1/8"	20	6,49	N/A	1212					

